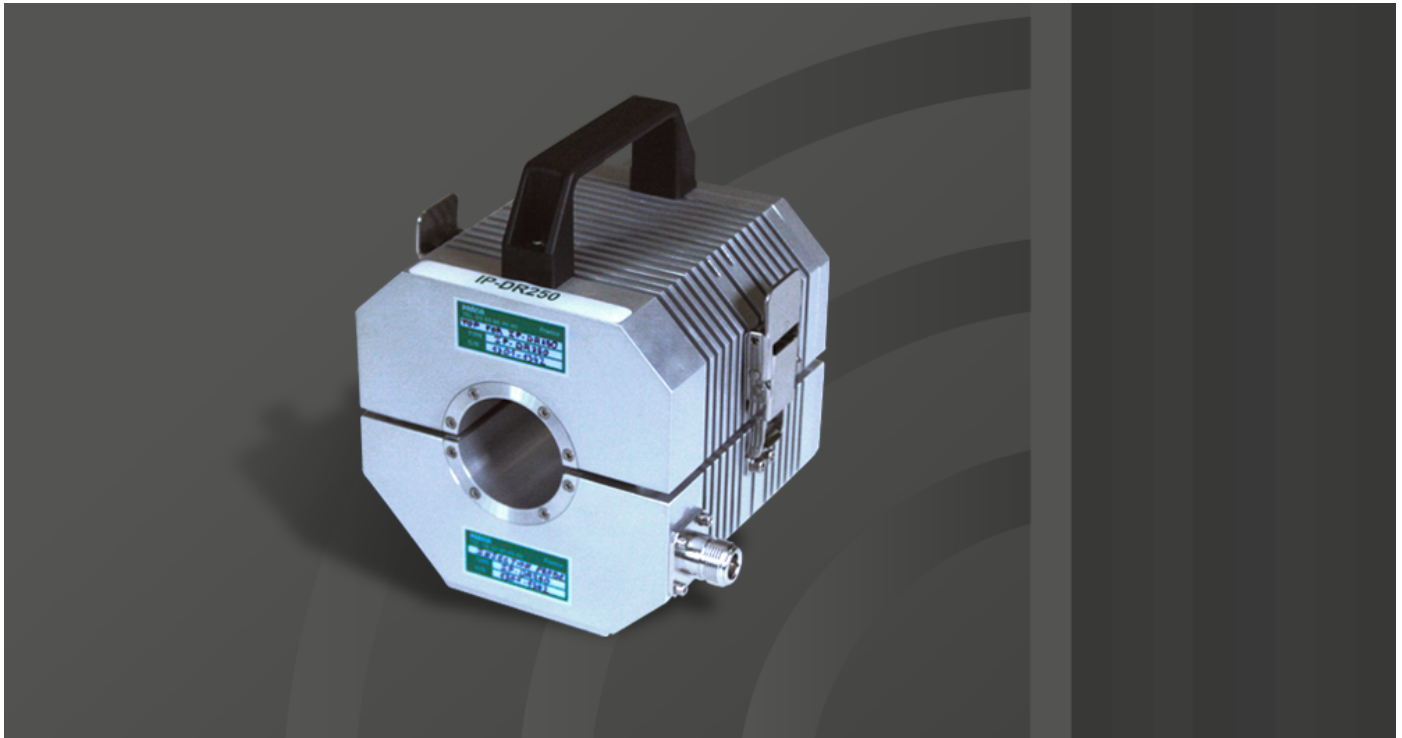


IP-DR250

Accessories: / 500 W CW



Prana IP-DR250

- Bulk Current Injection Probe
- Broadband (instantaneous single band) : 10 kHz – 400 MHz
- Typical power: 500 W CW
- Reliable, efficient and robust
- 3 years standard warranty

Maintenance

- Rapid diagnostic
- Minimal downtime
- Contract for preventive and corrective maintenance available

Applications

- EMC standards covered:-DO 160 D
 - Mil STD 461
 - Automotive standards: PSA, Renault, Ford, Daimler Chrysler...
 - ISO 11452-4
 - SAE J1113-4
 - ...

Accessories

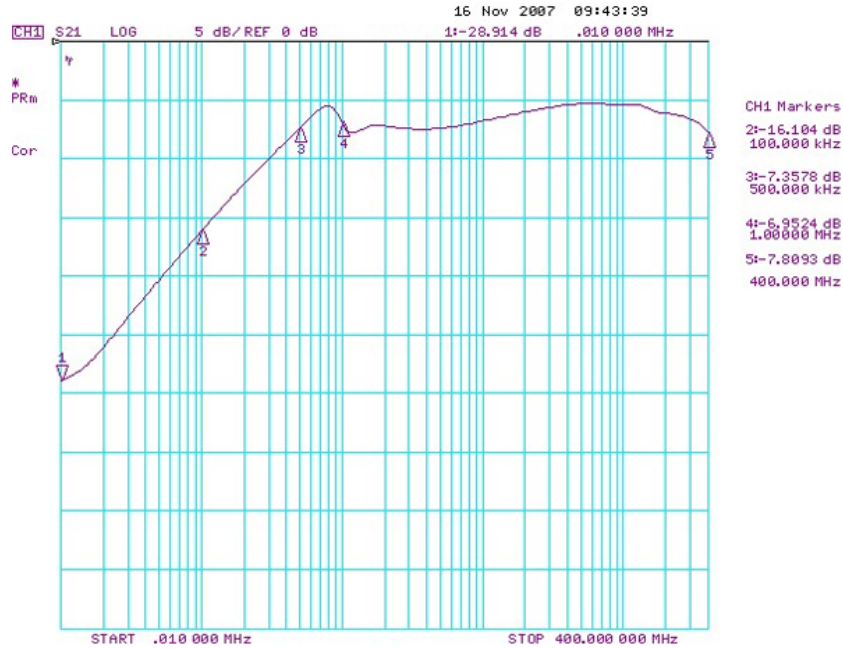
- CJ-DR250 => 500 W CW
- IP-DR250 => 500 W CW

Extra

Calibration JIG: CJ-DR250

IP-DR250

Accessories: / 500 W CW



Specifications

Frequency Range	0.01 - 400 MHz
Window diameter	43.8 mm
Outside dimensions (h x w x d)	120 mm x 126.5 mm x 125 mm
RF input connector	Type "N" Female
Weight	5.3 kg
Fastening	2 Clips
Maximum input Power	500 W
	150 W - 60 min / 300 W - 30 min / 500 W - 15 min
Maximum temperature on the core surface (do not exceed this temperature)	80 °C