



COMPLIANCE 5 SOFTWARE SUITE

THE DEFINITIVE SOFTWARE ENVIRONMENT FOR RF EMC TESTING

TESEO

Advanced Test Solutions for EMC

BENEFIT

C5

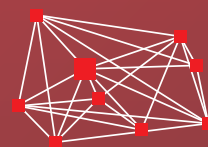
Modular, integrated,
flexible test
environment.



BENEFIT

SUPPORT

Experienced technical
team ready to help with
installation, training and
support.





COMPLIANT RF EMISSIONS AND IMMUNITY TESTING TO ANY STANDARD



Compliance 5 RF Emissions / Immunity is a sophisticated, fully featured RF EMC software package capable of performing all types of EMC emissions and immunity testing in standard and specialized applications. It comes in two versions, Compliance 5 RF Emissions and Compliance 5 RF Immunity, which can be used together or independently. Either way, Compliance 5 is a single, integrated test platform for all your RF EMC test needs.

Multi-user with administrator control means that Compliance 5 is suitable for Commercial Test Laboratories and Manufacturers. Compliance 5 allows the user to configure tests while giving the administrator overall control of important files such as transducer factor files, calibration data and results.

Industry specific application packages ensure that set-up time is minimized while providing fully compliant, fast-, efficient and repeatable testing. Optional packages are available for Military, Aerospace, Automotive and Reverberation Chamber testing.

Reporting is made easy using the Teseq® 'Global Report' function which automatically places test details, graphs, tables, etc. into a pre-existing template.

Application packages for all industries

	Commercial	Military	Aerospace	Automotive	Reverberation Chamber
Emissions	■	■	■	■	■
Immunity/Susceptibility	■	■	■	■	■

Please check with Teseq® for the current availability of the required application package.

Each test type has its own dedicated start form in which the operator can make a few simple configuration choices before initiating the test.

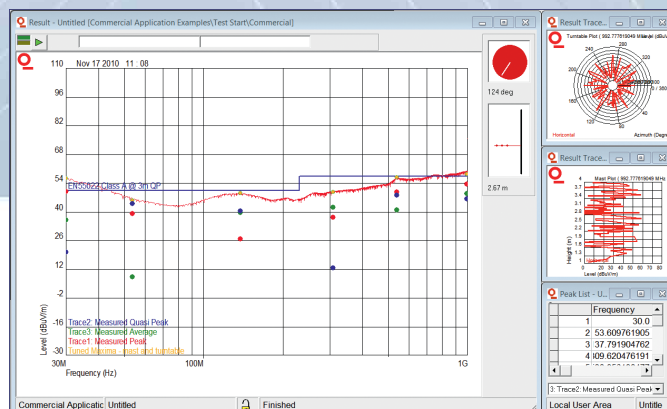
Basic parameters which are required by the standard are coded into the test. In some cases these can be changed by the administrator.

SET-UPS PACKAGED BY APPLICATION

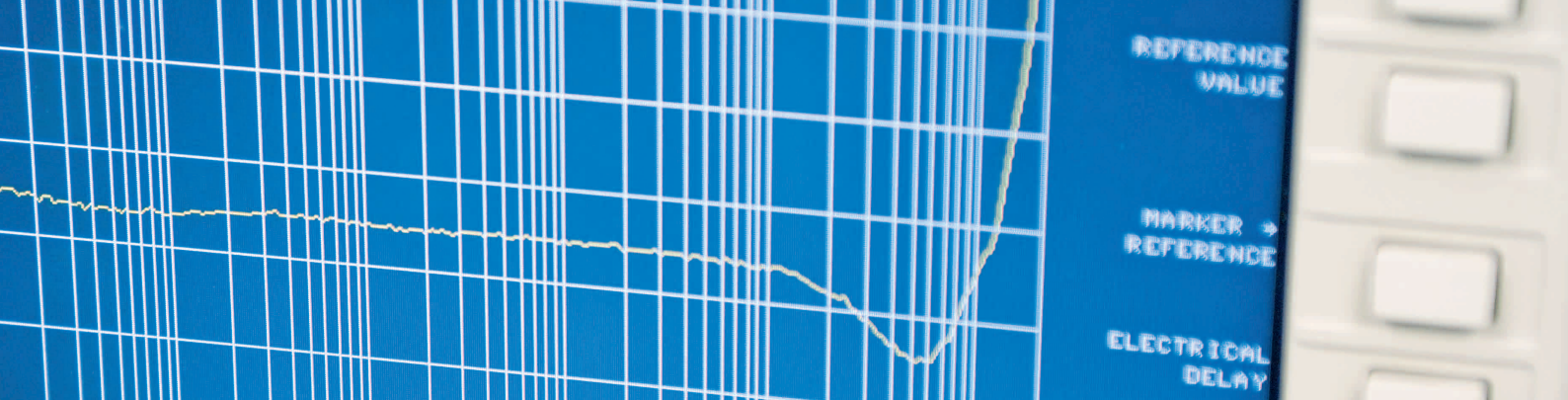
Industry specific application packages make compliance testing quick and easy. Selecting the specific instrumentation and instrument address in the pre-loaded configuration template is the only action required to prepare the system for use.

Commercial application packages are included with the software. Additional packages can be included with the initial order or can be purchased later.

	Commercial (standard)	Military (optional)	Aerospace (optional)	Automotive (optional)
Emissions	EN 55011 EN 55022 EN 55013 IEC 61000-6-3 IEC 61000-6-4 CISPR 14 FCC 15 VCCI CNS 13438	MIL-STD 461 C CE 01, 03, 06 RE 01, 02, 03 MIL-STD 461 E CE 101, 102, 106 RE 101, 102, 103 MIL-STD 461 F CE 101, 102, 106 RE 101, 102, 103	RTCA DO-160E DO-160F DO-160G Section 20 RF conducted and Radiated Emissions	CISPR 25 Manufacturer's Standards
Immunity	IEC 61000-4-3 IEC 61000-4-6	MIL-STD 461 D CS 114, RS 103 MIL-STD 461 E CS 101, CS 109, CS 114, RS 101, RS 103 MIL-STD 461 F CS 114, RS 103	RTCA DO-160E DO-160F DO-160G Section 20 RF conducted and Radiated Immunity	ISO 11452-2, SAE J1113/21 ISO 11452-3, SAE J1113/24 ISO 11452-4, SAE J1113/4 ISO 11452-5, SAE J1113/23 ISO 11452-6, SAE J1113/21 Manufacturer's Standards



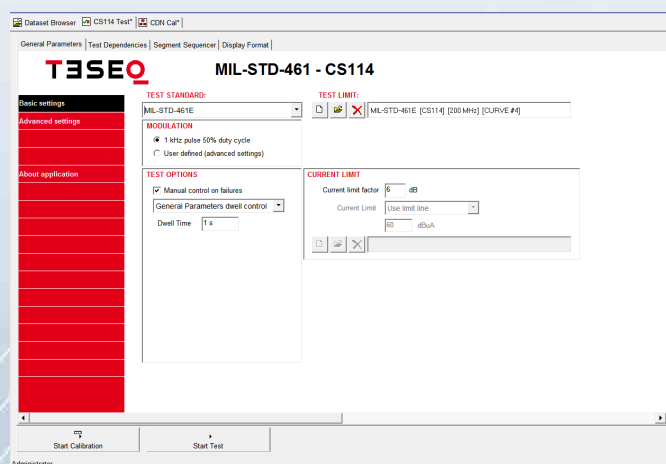
In the commercial radiated emissions test the signal level vs. turntable rotation and antenna mast height are plotted at each final test frequency, along with the original swept frequency data and tables of results for each detector used.



Compliance 5 is supplied with a dedicated package for making compliant measurements to a wide range of commercial standards. Pre-configured tests mean that the only set-up required is to select the type and address of the specific instruments to be used in the test.

Hardware configuration templates are embedded into each test. Simple drag and drop tools allow these to be customized by the operator. Specific items or equipment and their address are selected once and the configuration is then saved for continued use.

Simple forms specific to each different type of test allow the user to make a few simple selections before starting the test. Appropriate limits, frequency ranges, test levels, etc. are pre-loaded into each test to make the process quick, simple and most importantly, repeatable.



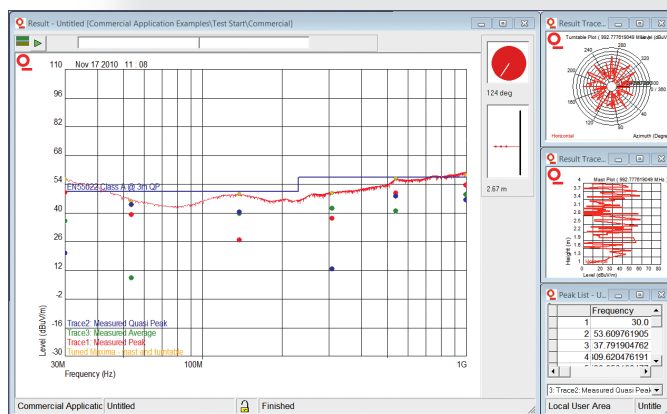
Detailed help files with context sensitive hot linking are included in both the emissions and immunity software. Manuals for the application specific packages are supplied separately on the source CD.



ENABLE EVERYTHING, LIMIT NOTHING

Advanced users and previous Compliance 3 software users can utilize the additional functionality to modify test procedures, test set-ups and EUT test sequences to further enhance the software performance, and to customize the system to their own needs.

All software functions can be modified by the user. New tests can be created by editing existing files. Tools are provided to allow editing of instrument drivers, test methods, EUT test sequences and report formats.



With more than 350 different instruments supported by our extensive driver database, Teseq® offers the largest range of instrument support available for download.

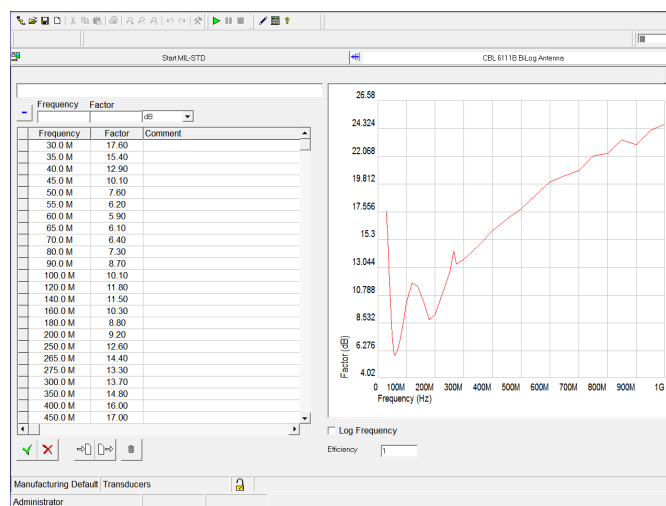
With hundreds of drivers available for download from our web site and new ones available by email ready to simply be copied into the driver folder, Teseq® offers fast support for integration. We even include a driver editing tool with Compliance 5, enabling the user to modify, adapt or even write their own drivers.





Compliance test laboratories require a high level of control over the storage, use and recording of test parameters and calibration factors. Compliance 5 has a complete administrator control system which allows configuration and equipment details to be stored along with the results.

Factors can be entered manually or imported into simple files which can be locked or made 'read only' by the system administrator.



A graphical representation of the data is automatically created on a user-selectable log or linear axis. This is provided to visually alert the user of any erroneous data points.

Data can be easily imported from various file formats including Notepad, CSV, Tab Delimited and many others.

USER ACCESS

The system administrator can create any number of shared areas and users, and can assign different access rights to the shared areas for each user. This allows users to access the various factor files and tests with the appropriate permission to modify these files.

Shared Area Attributes

Use the matrix below to define the access rights to shared areas within the dataset. Clicking the shared area name will rotate through the options for the respective shared area.

	User 1		User 2	
	Read	Write	Read	Write
Commercial Application	<input checked="" type="checkbox"/>	<input type="checkbox"/>	<input checked="" type="checkbox"/>	<input type="checkbox"/>
MIL-STD Application Examples	<input checked="" type="checkbox"/>	<input type="checkbox"/>	<input checked="" type="checkbox"/>	<input type="checkbox"/>
User Created Shared Area 1	<input checked="" type="checkbox"/>	<input checked="" type="checkbox"/>	<input checked="" type="checkbox"/>	<input type="checkbox"/>
User Created Shared Area 2	<input checked="" type="checkbox"/>	<input checked="" type="checkbox"/>	<input checked="" type="checkbox"/>	<input type="checkbox"/>

OK Cancel

Access to the administrator area is password-controlled. The administrator assigns each user their own password, allowing them to log into the system with the rights assigned by the administrator.

Compliance5 Emission

Compliance 5

Teseq

User Name: User 1

Password: *****

Data Set: f:\Files\DataSets\C5

Logging On Login Cancel

Compliance5 Emission f:\Files\datasets\c5\ Version: 5.26.22 Build 22 Copyright 2007 Teseq Ltd

POWERFUL, FLEXIBLE REPORTING

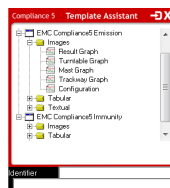
Reporting is a vital part of any test function and can be very time consuming. Compliance 5 includes a sophisticated reporting package which reduces the burden on valuable test engineer's time.

Pre-formatted templates can be created including company logo, explanatory text and pictures.

Global Report uses a simple tool (Template Assistant) to insert 'placeholders' into the document in order to create a template. At the end of a test Compliance 5 fills the placeholders in the template with graphs, tables and test details.

MY REPORT

The user can create a report using any header and text and then insert a placeholder where required using the Template Assistant.

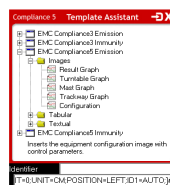


MY REPORT

The user can create a report using any header and text and then insert a placeholder where required using the Template Assistant.

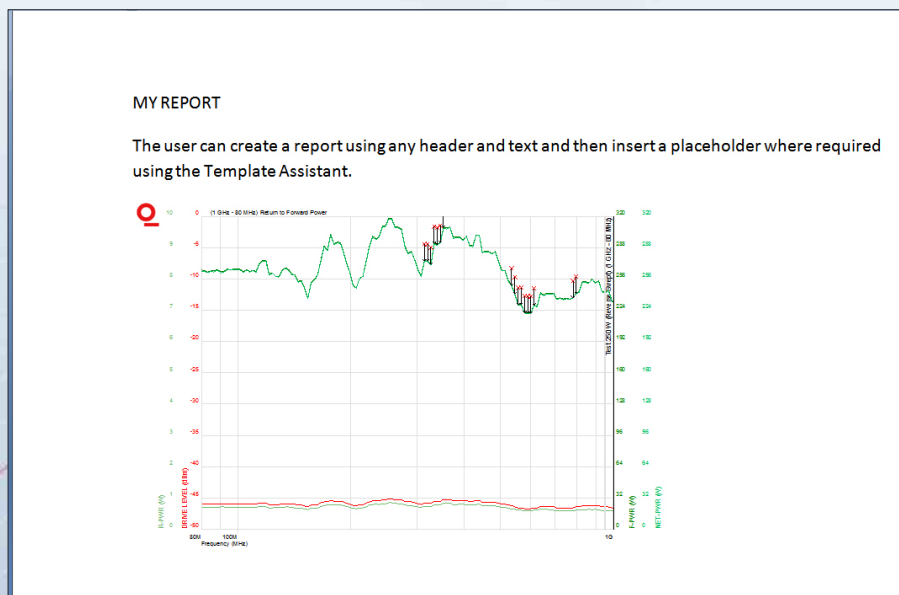
`#CSE.RESULT.GRAPH[WIDTH=0;HEIGHT=0;UNIT=CM;POSITION=LEFT;ORIENTATION=PORTRAIT;ID1=AUTO;ID2=AUTO;]#`

`#CSE.SETUP.CONFIGURATION[WIDTH=0;HEIGHT=0;UNIT=CM;POSITION=LEFT;ID1=AUTO;]#`

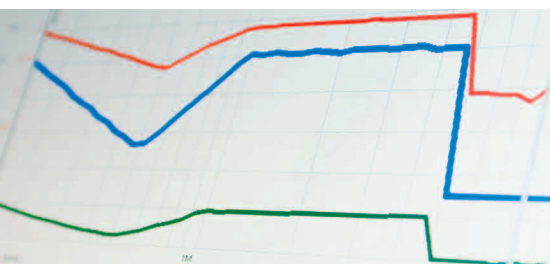


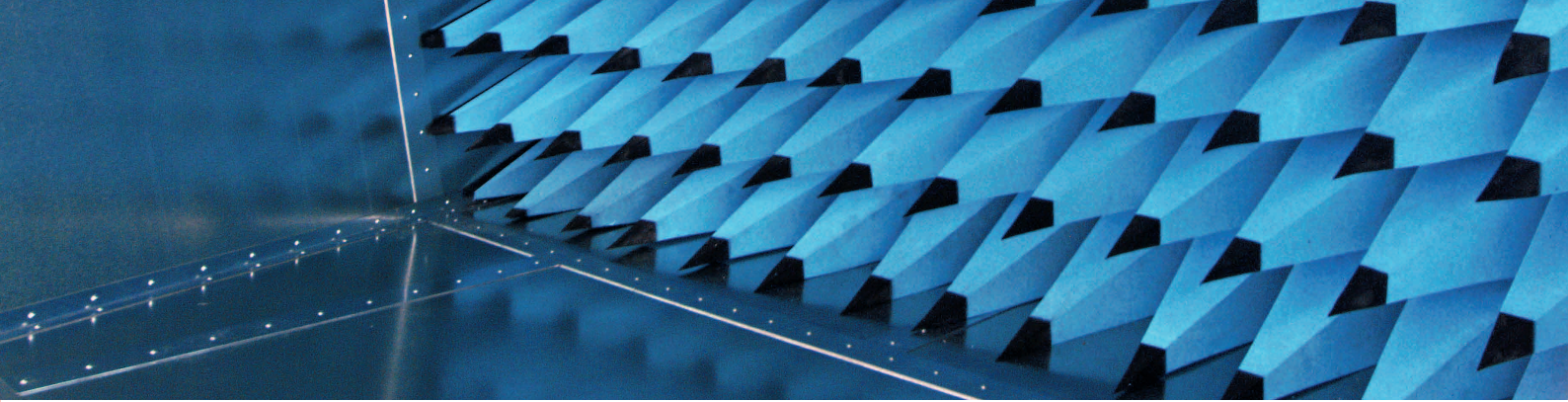


Any number of placeholders can be inserted and can be any combination of emissions or immunity items. Once a test is complete Compliance 5 will fill any placeholders relevant to that test. The resulting partially filled document can then be saved for eventual completion when the second test has been performed.



Once completed, the RTF file can be saved in other formats such as Word™ or PDF.





Compliance 5 is the culmination of Teseq®'s sixteen years of experience in the RF EMC software and systems business. During this time Teseq® has supported all new Windows operating systems. Teseq® is committed to the continued support of new operating systems, test equipment and standards.

Our large established customer base for Compliance 5 and its predecessors demands that we always be aware of new equipment, interfaces, operating systems, standards changes, etc. Our dedicated team of software and applications engineers are prepared to modify and update the software whenever new requirements arise.

A twelve month software maintenance agreement is supplied with the purchase of a new software license. This agreement can be renewed on a yearly basis and entitles the user to free software upgrades, access to our on-line support web page where new instrument drivers can be downloaded free of charge, and use of our Email based helpdesk: RF_Software@Teseq.com.

Please check our website for RF software support downloads!

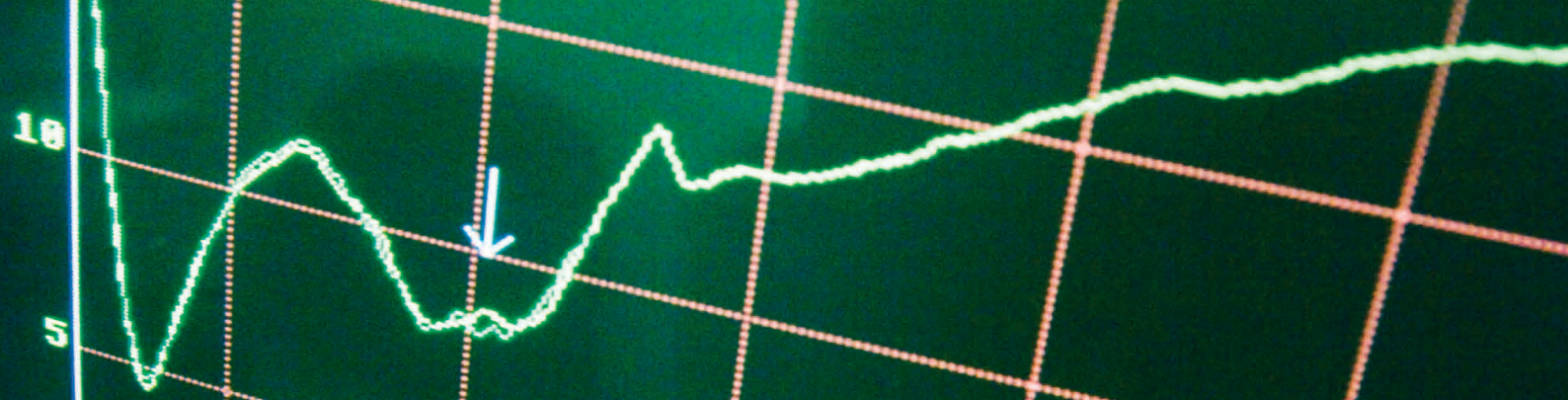
The Teseq® Compliance 5 software team is proud to support its extensive customer base of manufacturers and test houses in the USA, Europe and Asia who are involved in all types of commercial, military, aerospace and automotive EMC testing.

PRODUCT DETAILS

Compliance 5 and its associated industry specific applications require the use of a hardware key (dongle). One dongle is supplied for each new license purchased, a dongle will already be in the user's possession in the case of most upgrades.

The applicable commercial application (Emissions or Immunity) is included in the cost of all software and is supplied for separate installation from the supplied Compliance 5 disc. Although all of the additional industry specific applications are included on the disc, these need to be purchased separately in order for them to become active.

Product	Items Supplied		Notes
Compliance 5 Emissions			
New User	Compliance 5 disc	Dongle	Software will self register from the dongle
Upgrade from V4.01	Compliance 5 disc		User's dongle will require upgrade
Upgrade from earlier version	Compliance 5 disc	Dongle	Licence will need to be transferred to the dongle and then upgraded
Compliance 5 Emissions Offline			
New User	Compliance 5 disc	Dongle	Software will self register from the dongle
Upgrade from V4.01	Compliance 5 disc		User's dongle will require upgrade
Upgrade from earlier version	Compliance 5 disc	Dongle	Licence will need to be transferred to the dongle and then upgraded
Compliance 5 Immunity			
New User	Compliance 5 disc	Dongle	Software will self register from the dongle
Upgrade from V4.01	Compliance 5 disc		User's dongle will require upgrade
Upgrade from earlier version	Compliance 5 disc	Dongle	Licence will need to be transferred to the dongle and then upgraded
Compliance 5 Immunity Offline			
New User	Compliance 5 disc	Dongle	Software will self register from the dongle
Upgrade from V4.01	Compliance 5 disc		User's dongle will require upgrade
Upgrade from earlier version	Compliance 5 disc	Dongle	Licence will need to be transferred to the dongle and then upgraded
Additional Industry Specific Applications			
Supplied with new purchase			Install file is on the Compliance 5 disc and the dongle is pre-loaded with required codes
Supplied with an upgrade			Install files in on the Compliance 5 disc, dongle will require an upgrade code
Supplied separately	Compliance 5 disc		User's dongle will require an upgrade code

**Operating systems supported:**

Windows XP or 7 (32 or 64 bit)

Minimum PC requirements:

Windows XP
1.6 GHz processor
2 Gb RAM
500 Mb free disc space
Keyboard
Mouse
CD Drive

Using the minimum required specification could result in slower than optimal opening of some windows and delays when the software is required to perform calculations in a repetitive loop.

PCs below the minimum requirement may still run Compliance 5; however, performance related issues will not be supported.

Recommended PC requirements:

Windows 7
2.5 GHz core 2 Duo or Quad
RAM 4 Gb for Windows 7/32
 6 Gb for Windows 7/64
1 Gb free disc space
Keyboard
Mouse
CD Drive

GTEM/EMIPAK

Low cost, reduced functionality versions of Compliance 5 software are available for use for either pre-compliance measurements (Emipak 5) or GTEM based testing (GTEM 5).

These products can be upgraded to the full compliance version without data loss. Please see separate datasheet for more details.

SERVICE AND SUPPORT

Customization service. Compliance 5 is designed to allow the user to create any test method required. This great flexibility is one of the most important benefits of this software. However, many find this initial task daunting and prefer a more 'out of the box' approach. Two service options are therefore available:

Teseq® can provide a series of standard, pre-configured test packages for either, commercial, Automotive, military or aerospace testing. These packages can be easily imported into the standard software and with minimal adjustments to the hardware configuration, adapted to the user system.

Teseq® can provide test method customization services to create totally new test methods based on customer needs, or to modify one of the above packages to suit individual needs.

Support contracts. Teseq® provides a yearly renewable service contract which entitles the user to free upgrades as new software versions are issued plus free access to our online help desk. The help desk can offer immediate assistance with installation, operation and functionality of the software and will act to liaise between the user and our team of software and applications engineers to solve more detailed questions. The help desk takes ownership of all customer contacts and will ensure that all questions are answered and that the contact is taken to a conclusion.

Off-Line software. Many Compliance 5 users find it helpful to be able to work with the software in the comfort of their office when updating calibration files, preparing new tests and analyzing results. Teseq® therefore offers a low cost off-line version of the software which can be used for any function except actually controlling test equipment. Files can be passed to and from the main operational software thus allowing tests to be prepared and reports to be issued without utilizing the main computer.

Licensing and security. Compliance 5 is licensed using a hardware key (dongle). Each software package purchased is supplied with a USB key that will activate the software on any PC while it is plugged in. This provides maximum flexibility and security. Should the PC fail, the software can be loaded onto a new PC and so long as the C5 data set has been backed up, the system can be back and working in less than an hour.



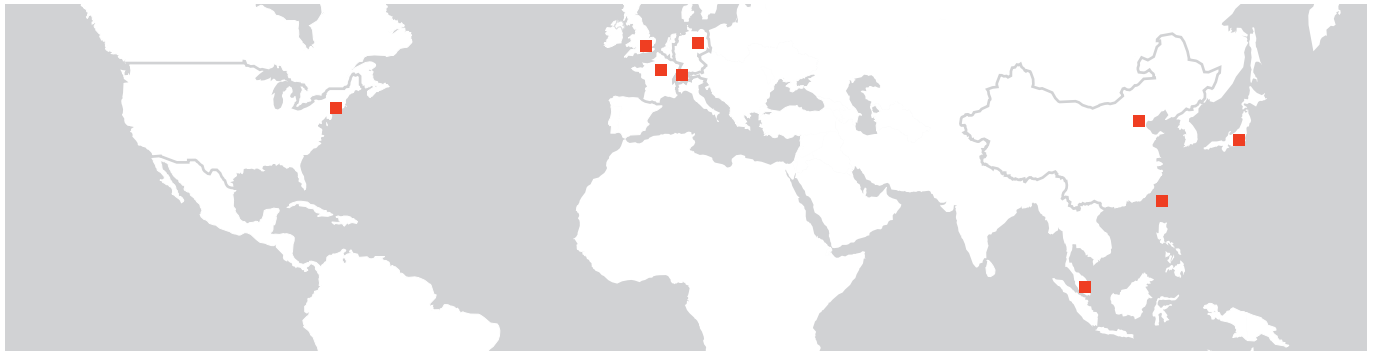


EMC INSTRUMENTATION AND SYSTEMS TO SUIT ANY BUDGET.



Teseq® offers the world's most comprehensive range of EMC systems for immunity and emission testing. We take great pride in our world class research and development program, backed by state-of-the-art global manufacturing. Our membership in the relevant international committees demonstrates our commitment to the industry. Our network of agents and distributors offers market leading EMC expertise tailored to local needs in more than 30 different countries.

Our unique modular approach to EMC is focused on our customers' business needs. By breaking down the barriers between traditionally separate test functions Teseq® helps to optimize test processes and to bring products to market quicker.



Headquarters

Teseq AG
4542 Luterbach
Switzerland
T +41 32 681 40 40
F +41 32 681 40 48
sales@Teseq.com
www.Teseq.com

China

Teseq Company Limited
T +86 10 8460 8080
F +86 10 8460 8078
chinasales@teseq.com

France

Teseq Sarl
T +33 1 39 47 42 21
F +33 1 39 47 40 92
francesales@teseq.com

Germany

Teseq GmbH
T +49 30 5659 8815
F +49 30 5659 8811
desales@teseq.com

Japan

Teseq K.K.
T +81 3 5456 8929
F +81 3 5456 8930
japansales@teseq.com

Singapore

Teseq Pte Ltd.
T +65 6846 2488
F +65 6841 4282
singaporesales@teseq.com

Switzerland

Teseq AG
T +41 32 681 40 50
F +41 32 681 40 48
sales@teseq.com

Taiwan

Teseq (Taiwan) Ltd.
T +886 2 2917 8080
F +886 2 2917 2626
taiwansales@teseq.com

UK

Teseq Ltd.
T +44 845 074 0660
F +44 845 074 0656
uksales@teseq.com

USA

Teseq Inc.
T +1 732 417 0501
F +1 732 417 0511
Toll free +1 888 417 0501
usasales@teseq.com



To find your local partner within
Teseq®'s global network, please go
to **www.teseq.com**

691-133C February 2012

© 2012 Teseq®
Specifications subject to change without notice.

Teseq® is an ISO-registered company. Its products are designed
and manufactured under the strict quality and environmental
requirements of the ISO 9001.

This document has been carefully checked. However, Teseq® does
not assume any liability for errors or inaccuracies.

T E S E Q

Advanced Test Solutions for EMC