



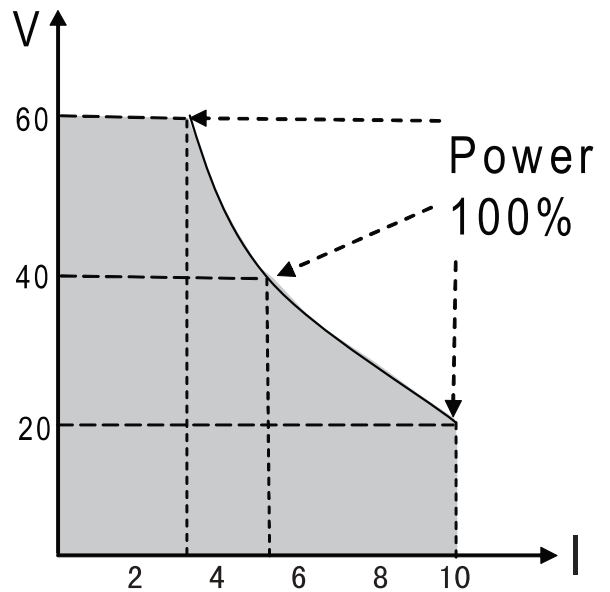
IT6952A

■ Feature

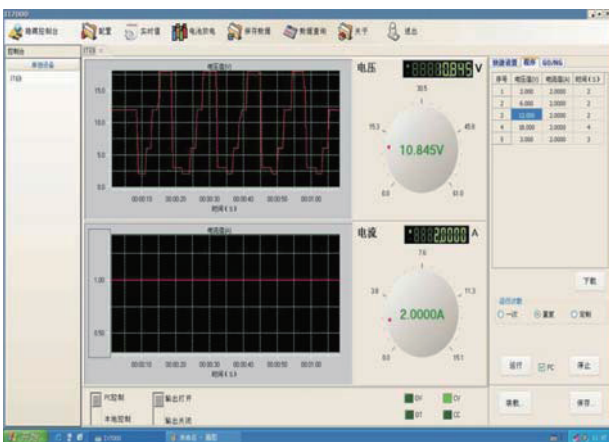
- VFD display
- Output on/off control
- Convenient data entry via knob or numerical key pad
- High accuracy and high resolution: 1mV/0.1mA
- Low ripple and low noise
- Rack mount kit available
- List Mode: Generate, store and execute test sequences without the need for an external computer.
- Built-in communication interface:RS232/USB/GPIB
- Output Timer(0.1 ~ 99999.9S) Function
- Remote Sense Function
- OVP/OCP/OTP protection functions
- Intelligent fan control

IT6900A series high performance power supply

IT6900A series are flexible range single output power supplies. With an easy-to-read VFD display, high accuracy and resolution up to 1mV/0.1mA. It allows to generate and store programmed sequences directly from the front panel. Built-in RS232,USB,GPIB interfaces to provide flexibility for remote operation.IT6900A is a compact, laboratory grade power supply well-suited for application in design field, production or use in university labs.



IT6932A I-V curve graph

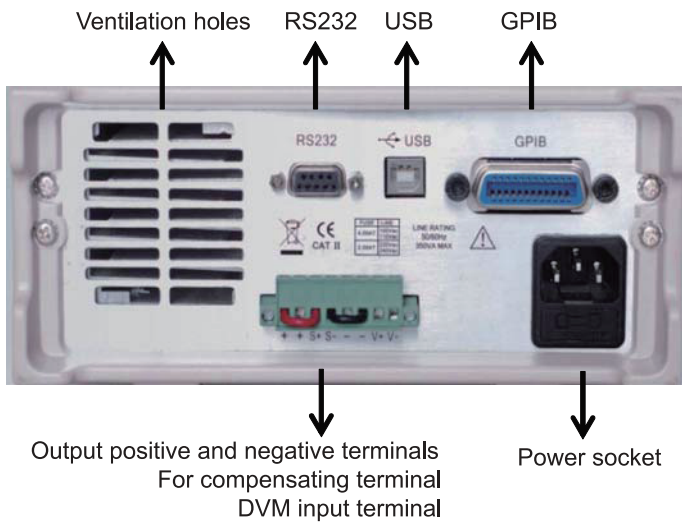


IT7000 software

Model	Power	Voltage	Current
IT6932A	200W	60V	10A
IT6942A	360W	60V	15A
IT6952A	600W	60V	25A
IT6953A	600W	150V	10A

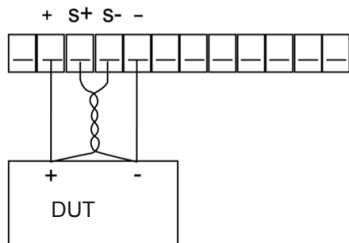
IT6900A supports standard RS232、USB、GPIB interface,and provide free IT7000 software .IT7000 software with powerful monitoring function,can record and display the voltage and current,and programmable automatic test.

### Rear panel instruction



### Remote Sense

Remote sense can be used to compensate for voltage drops (up to 1 V) due to resistance from test leads connected to your device under test (DUT), thus providing more accurate output voltage. The power supply is initially setup to local sense mode by default. Refer to the following sections for details of local and remote sense setup.



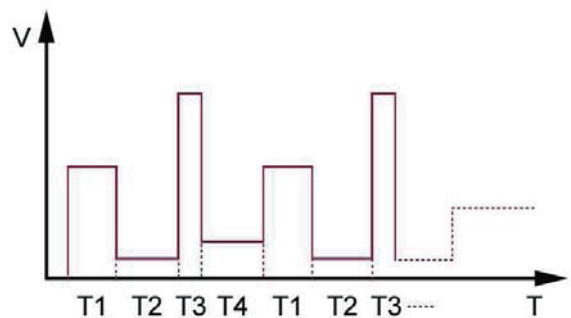
### Built-in DVM

IT6900A provides a built-in Digital meter which can measure DC volts in a range from 0.001V-61.000V. The voltage value is displayed on the left bottom field of the display.

### Timer function

IT6900A supports output on timer function. If Timer State is set to ON, then power supply output will turn off after the timer elapsed. The timer setting range is 0.1~99999.9S

### List mode



List mode allows user to create a sequence of steps, store it into the power supply's non-volatile memory and execute it. The input parameters for generating a list include the name of the list file, the input steps (no more than 150 steps), the step time (the minimum is 100mS) and the value of each step.

### Convenient panel operation

An easy-to use rotary knob and self-guiding keypads allow you to set the output at your desired value without any effort. Also, both voltage and current levels can be set to a maximum resolution of 1mV/0.1mA. In addition, you can store and recall for up to 9\*8 groups setups using the internal non-volatile memory.

### Auto Range function

IT6900A series power supply has adopted Auto-range technology. One unit could replace multiple units with different specifications. Take IT6932A(60V/10A/200W) as an example, the user could use it as a 60V/3.3A/200W instruments and also a 20V/10A/200W unit.

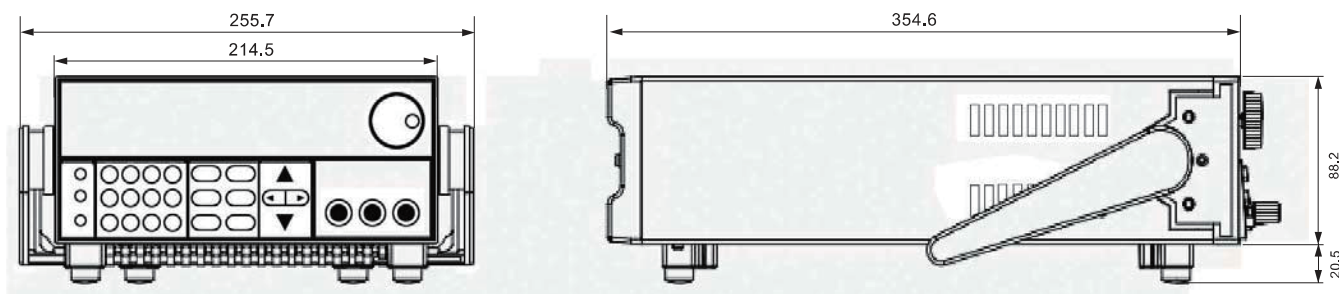
### Protection Functions

IT6900A series power supply provides OV, OC, OT protection functions. It enables user to configure OVP and OCP value. When any protection level is triggered, power supply will turn off the output automatically.

### IT6900A Series Specification

Parameter		IT6932A	IT6942A	IT6952A	IT6953A
Rated value ( 0 °C~40 °C)	voltage	0 ~60V	0 ~60V	0 ~60V	0 ~150V
	current	0~10A	0~15A	0~25A	0~10A
	power	200W	360W	600W	600W
Load regulation± (%of output+offset)	voltage	≤0.01%+5mV	≤0.01%+8mV	≤0.01%+15mV	≤ 0.01%+15mV
	current	≤0.05%+4mA	≤0.05%+6mA	≤0.1%+10mA	≤ 0.05%+10mA
Line regulation ± (%of output+offset)	voltage	≤0.01%+5mV	≤0.01%+8mV	≤0.01%+15mV	≤ 0.01%+15mV
	current	≤0.05%+4mA	≤0.05%+6mA	≤0.1%+10mA	≤ 0.05%+10mA
Setup resolution	voltage	1mV	1mV	1mV	1mV (<100V)10mV (>100V)
	current	0.1mA	0.1mA	0.1mA	0.1mA
Readback resolution	voltage	1mV	1mV	1mV	1mV (<100V)10mV (>100V)
	current	0.1mA	0.1mA(<10A)1mA(>10A)	0.1mA(<10A)1mA(>10A)	0.1mA
Setup accuracy (25°C±5°C) ±(%of output+offset)	voltage	≤0.03%+5mV	≤0.03%+5mV	≤0.03%+5mV	≤ 0.03%+20mV
	current	≤0.1%+10mA	≤0.1%+15mA	≤0.1%+25mA	≤ 0.1%+25mA
Readback resolution (25°C±5°C) ±(%of output+offset)	voltage	≤0.03%+5mV	≤0.03%+5mV	≤0.03%+5mV	≤ 0.03%+20mV
	current	≤0.1%+10mA	≤0.1%+15mA	≤0.1%+25mA	≤ 0.1%+25mA
Ripple (20Hz ~20MHz)		≤8mVp-p	≤15mVp-p	≤20mVp-p	≤ 50mVp-p
		≤6mArms	≤8mArms	≤15mArms	≤15mArms
Sample rate		10HZ		10HZ	
Dimension ( mm)		214.5mmW×88.2mmH×354.6mmD		214.5mmW×88.2mmH ×445mmD	
Weight		7.7Kg		15Kg	

### IT6900A series dimension



- IT6932A / IT6942A :214.5mmW×88.2mmH×354.6mmD
- IT6952A / IT6953A :214.5mmW×88.2mmH×445mmD

#### Standard accessories

power cord

calibration report

user manual